

PLAN VIEW
SCALE: 1/2" = 1'-0"

MT-12 CONVEYOR IS DESIGNED TO TRANSPORT UP TO 15" DIA. PLATES, CUPS, AND CUTLERY. SPECIFY SIZE & MAKE OF PLATES. PLEASE PROVIDE CADDY WITH SAMPLE PLATE.

GENERAL CONTRACT CONDITIONS
ELECTRICAL WORK DONE BY CADDY CORPORATION IS EXECUTED IN COMPLIANCE WITH STANDARDS PUBLISHED BY THE UNDERWRITERS LABORATORIES, INC. INSOFAR AS APPLICABLE, AND THE LATEST EDITION OF THE NATIONAL ELECTRICAL CODE (NEC). CADDY CORPORATION DOES NOT ACCEPT ANY RESPONSIBILITY FOR THE REQUIREMENTS OF ANY REGIONAL AND/OR LOCAL CODES THAT ADD OR DEVIATED FROM THE ACCEPTED STANDARDS OF THE ABOVE AGENCIES. ANY FIELD WORK RELATING TO THE MODIFICATION OF ELECTRIC OR PLUMBING SYSTEMS, TO MEET REGIONAL OR LOCAL CODE REQUIREMENTS IS TO BE DONE BY OTHERS AND WITHOUT BACK CHARGES TO CADDY CORPORATION, UNLESS THESE CONDITIONS WERE PREVIOUSLY BROUGHT TO OUR ATTENTION AND ARE EXPRESSLY INCLUDED IN OUR WRITTEN QUOTATION.
ALL WIRING AND PLUMBING AT THE JOB SITE IS THE RESPONSIBILITY OF OTHERS. EQUIPMENT WILL BE CONSTRUCTED IN ACCORDANCE WITH OUR DRAWING(S) WHICH MUST BE APPROVED PRIOR TO FABRICATION. ANY SUBSEQUENT CHANGES REQUIRED MUST BE SUBMITTED TO US IN WRITING AND ACKNOWLEDGED ON OUR STANDARD FORM.

NOTES	
1.	[] VERIFY ROUGH-IN SCHEDULE.
2.	EACH "[] VERIFY ON THIS DRAWING MUST BE CONFIRMED. YOUR FABRICATION APPROVAL OF THIS DRAWING WILL INDICATE YOUR ACCEPTANCE AS SHOWN.
3.	CONVEYORS ARE TO BE E.T.L. LISTED WITH LABELS AFFIXED.
4.	CONVEYOR SYSTEM WILL BE SHIPPED IN (3) PIECES AS INDICATED IN PLAN VIEW.
5.	MT-12 CONVEYOR IS DESIGNED TO TRANSPORT UP TO 15" DIA. PLATES, CUPS, AND CUTLERY.
6.	MT-12 CONTROL STATION INCLUDES CONVEYOR START/STOP SWITCH & VARIABLE SPEED CONTROL, AND BELT WASHER ON/OFF SWITCH.
7.	BELT WASHER OPERATES AUTOMATICALLY WHILE BELT IS RUNNING. BELT WASHER INCLUDES ON/OFF SWITCH AND DETERGENT INJECTION SYSTEM. DETERGENT INJECTION SYSTEM IS CONTROLLED BY A MANUALLY SET TIMER TO RUN UP TO 15 MINUTES.
8.	PROVIDE CADDY WITH MANUFACTURER'S MAKE, MODEL NUMBER, AND DETAILED DRAWINGS OF THE DISHMACHINE.

ROUGH-IN SCHEDULE		
NOTE: STUB UP FLOOR ROUGH-INS 4" A.F.F. ROUGH-INS EXTENDING FROM WALLS TO BE 10" A.F.F.		
SYM	QTY	DESCRIPTION
A	2	1 1/2" I.P.S. WASTE
B	1	120V., 60HZ., 1PH., 3/4 HP., 15 AMPS.
C	2	1/2" I.P.S. HOT WATER
D	2	1/2" I.P.S. COLD WATER
E	5	1/2" I.P.S. GUSHERHEAD 7/8" DIA. HOLE BY CADDY FISHER GUSHER HEAD #2906

REVISIONS			
REV	DATE	BY	REMARKS
A	01/30/19	ST	UPDATED WALLS TO CUSTOMER MEASUREMENTS, REMOVED (3) HOSE REELS, REPLACED WITH (3) PRE-RINSE UNITS, WIDENED UNIT BY 6", REMOVED MIXING VALVE AND CORRESPONDING NOTE, ADDED ROUGH-INS AT NEW PRE-RINSE LOCATIONS
B	03/28/19	ST	REMOVED 2 CUSTOMER SUPPLIED FAUCETS ALONG WITH CORRESPONDING ROUGH-INS, AND REMOVED "BUMP-OUTS" ON CONVEYOR, AND MOVED TROUGH BACK 2"
C	06/10/19	ST	ADDED (1) CONTROL STATION AND (1) SET OF TURN GUIDES.

CADDY CORPORATION
509 SHARPTOWN ROAD, P.O. BOX 345
BRIDGEPORT, NJ 08014
TEL: (856) 467-4222 FAX: (856) 467-5511
WWW.CADDYCORP.COM

EQUIPMENT SCHEDULE

MT-12 RENNOVATION AND NEW SOILED WARES CONVEYOR

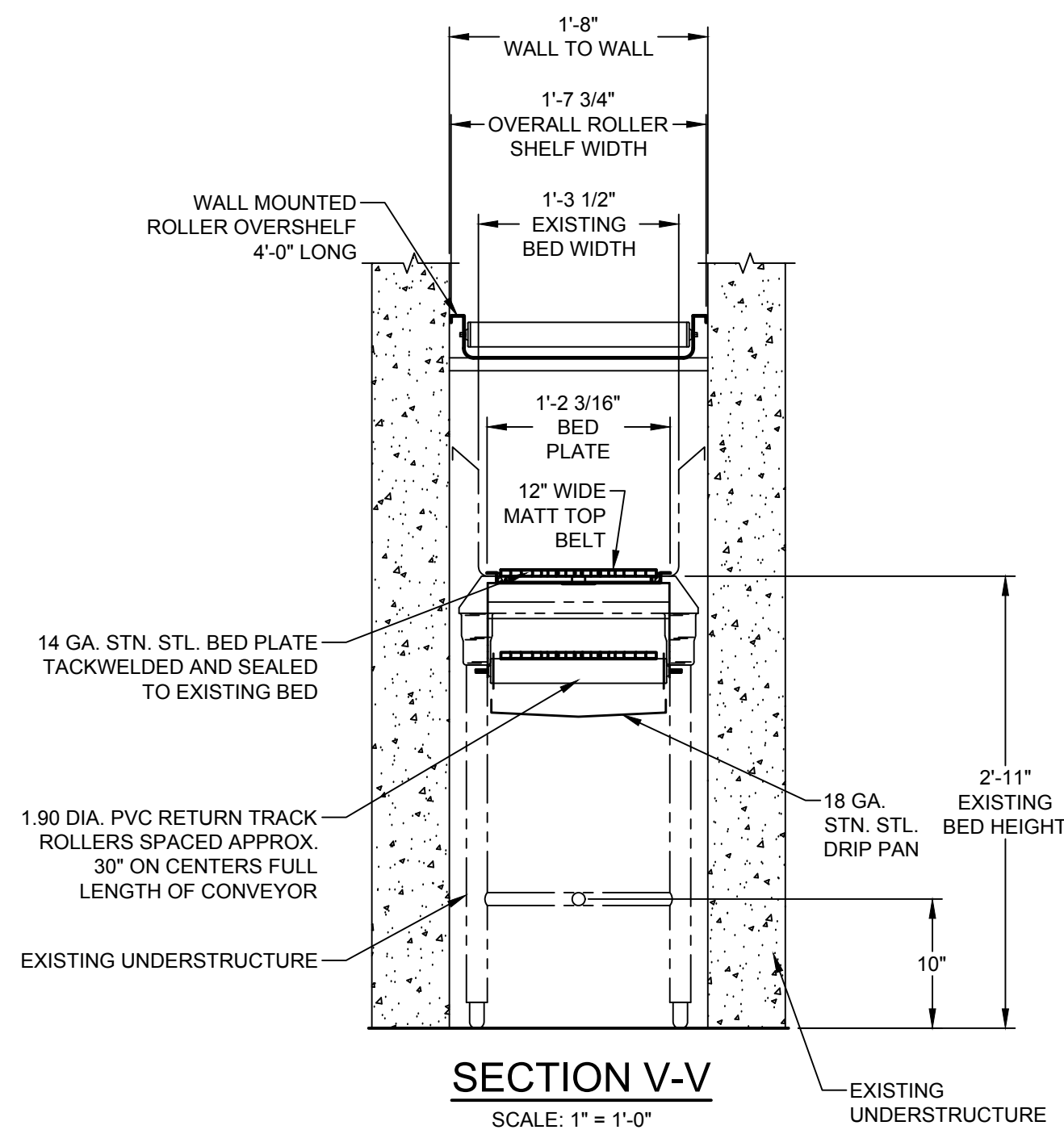
CADDY NO. 34516-1 ITEM NO. 1

JOB: SUNY DELHI - McDONALD HALL
LOC: AGAWAM, MA
CUST: KITTREDGE EQUIPMENT CO. INC
CUST #: 109372

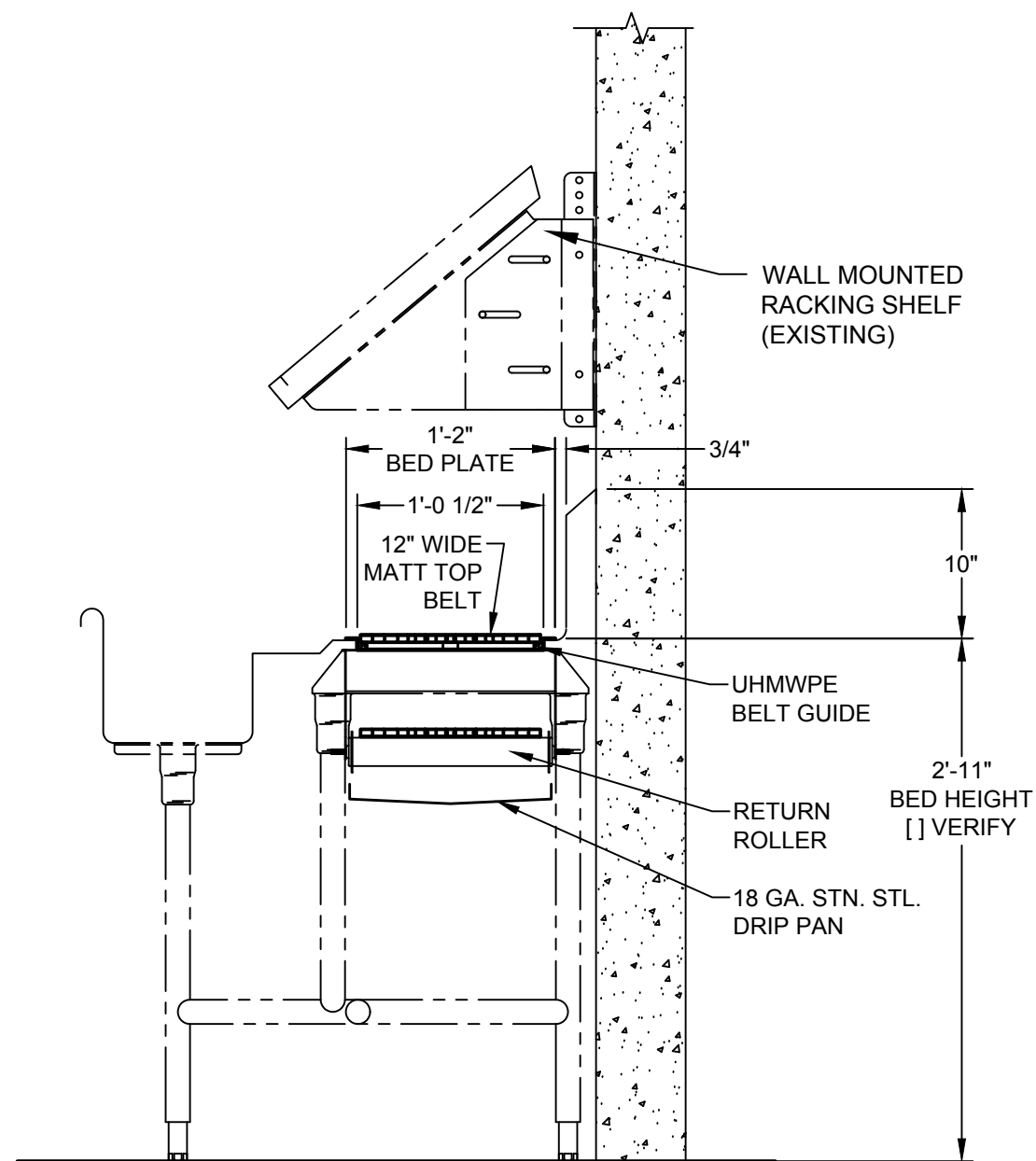
DATE: 12/14/18 SCALE: AS NOTED
DR BY: ST APPD BY: *BGN*

DWG# D-1-34516-C SHT 1 OF 2

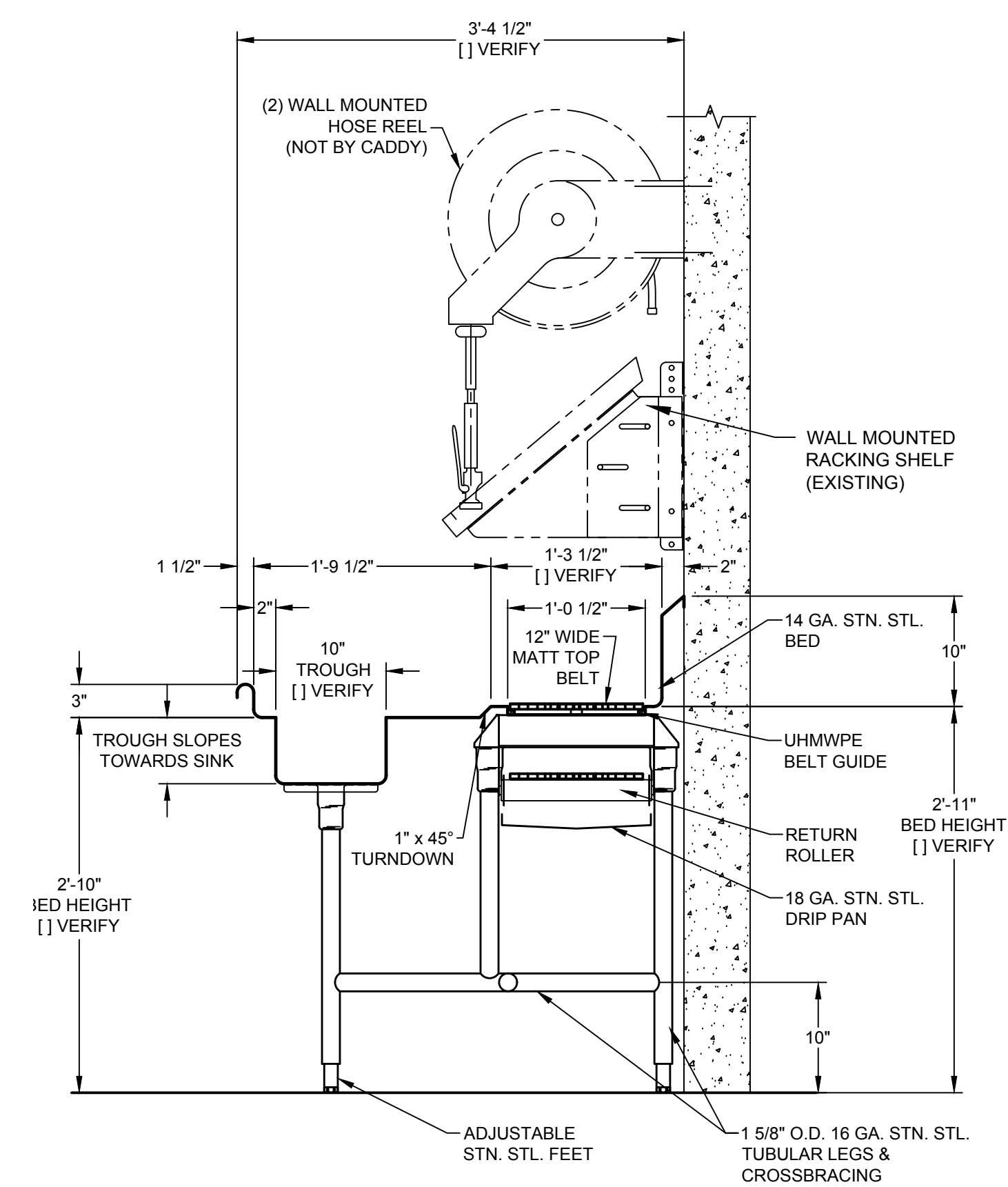




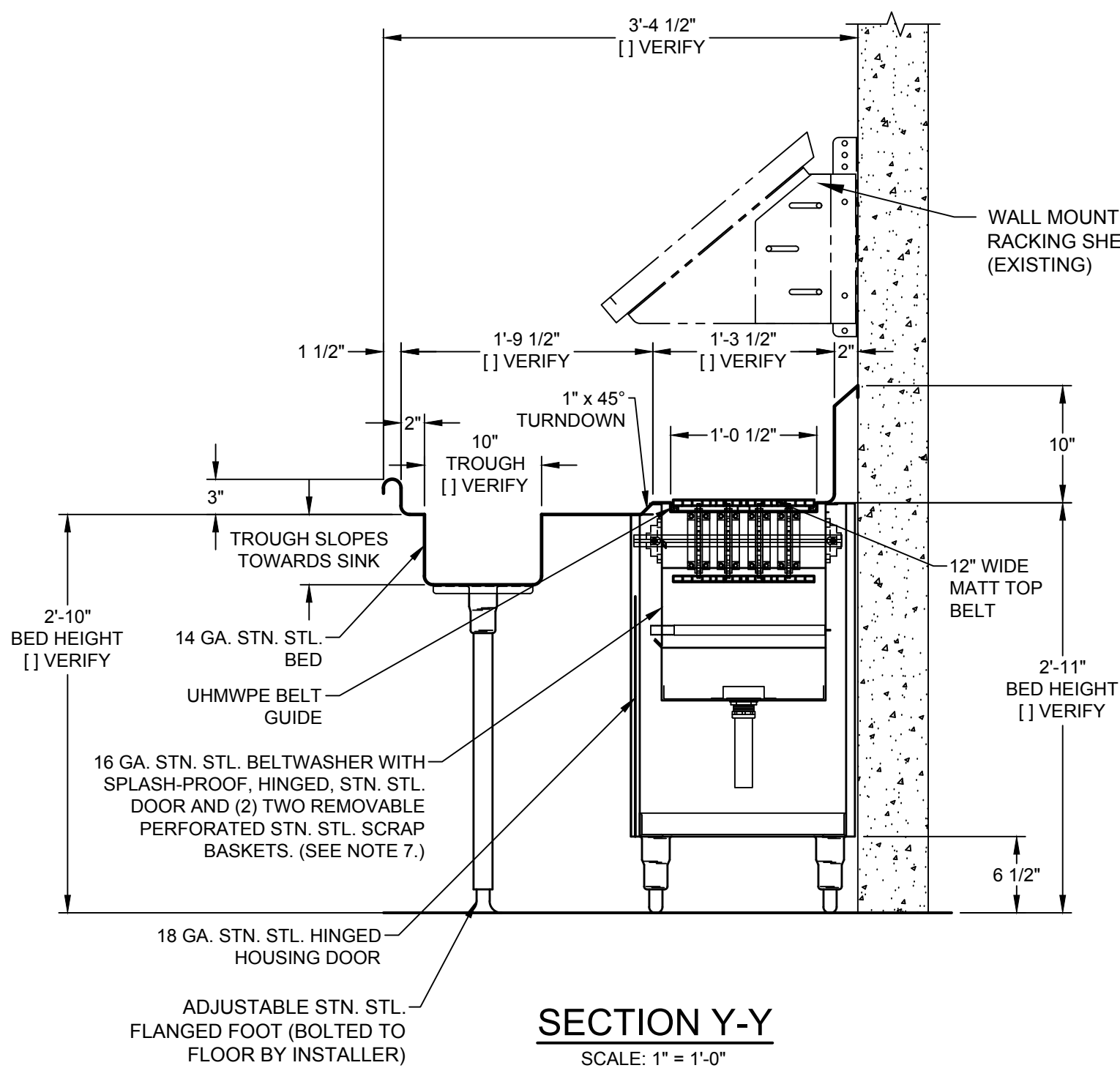
SECTION V-V
SCALE: 1" = 1'-0"



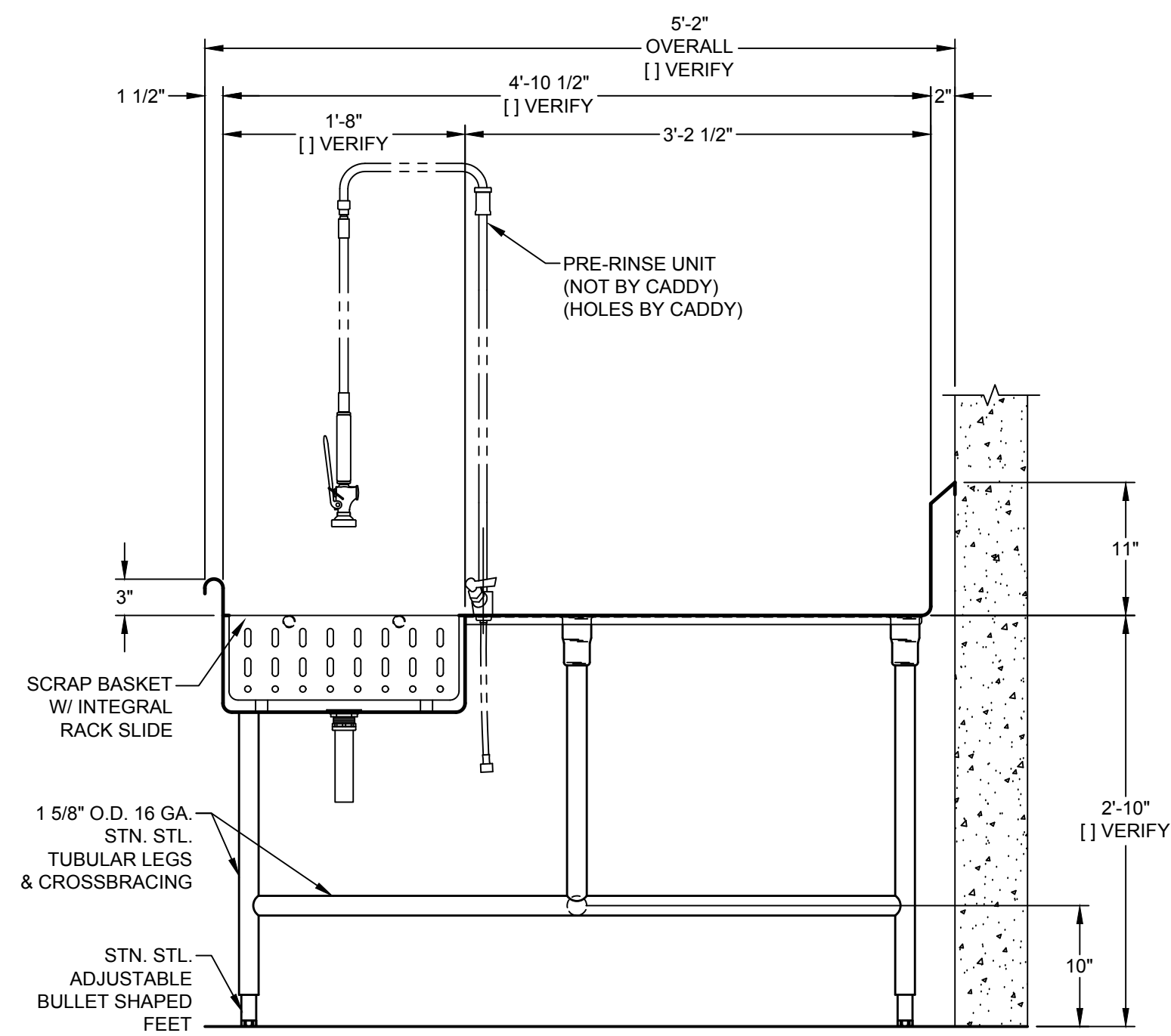
SECTION W-W
SCALE: 1" = 1'-0"



SECTION X-X
SCALE: 1" = 1'-0"

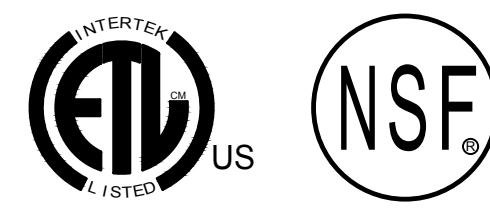


SECTION Y-Y
SCALE: 1" = 1'-0"



SECTION Z-Z
SCALE: 1" = 1'-0"

GENERAL CONTRACT CONDITIONS
ELECTRICAL WORK DONE BY CADDY CORPORATION IS EXECUTED IN COMPLIANCE WITH STANDARDS PUBLISHED BY THE UNDERWRITERS LABORATORIES, INC. INSOFAR AS APPLICABLE, AND THE LATEST EDITION OF THE NATIONAL ELECTRICAL CODE (NEC). CADDY CORPORATION DOES NOT ACCEPT ANY RESPONSIBILITY FOR THE REQUIREMENTS OF ANY REGIONAL AND/OR LOCAL CODES THAT ADD OR DEVIATED FROM THE ACCEPTED STANDARDS OF THE ABOVE AGENCIES. ANY FIELD WORK RELATING TO THE MODIFICATION OF ELECTRIC OR PLUMBING SYSTEMS, TO MEET REGIONAL OR LOCAL CODE REQUIREMENTS IS TO BE DONE BY OTHERS AND WITHOUT BACK CHARGES TO CADDY CORPORATION, UNLESS THESE CONDITIONS WERE PREVIOUSLY BROUGHT TO OUR ATTENTION AND ARE EXPRESSLY INCLUDED IN OUR WRITTEN QUOTATION.
ALL WIRING AND PLUMBING AT THE JOB SITE IS THE RESPONSIBILITY OF OTHERS. EQUIPMENT WILL BE CONSTRUCTED IN ACCORDANCE WITH OUR DRAWING(S) WHICH MUST BE APPROVED PRIOR TO FABRICATION. ANY SUBSEQUENT CHANGES REQUIRED MUST BE SUBMITTED TO US IN WRITING AND ACKNOWLEDGED ON OUR STANDARD FORM.



REVISIONS			
REV	DATE	BY	REMARKS
A	01/30/19	ST	UPDATED WALLS TO CUSTOMER MEASUREMENTS, REMOVED (3) HOSE REELS, REPLACED WITH (3) PRE-RINSE UNITS, WIDENED UNIT BY 6". REMOVED MIXING VALVE AND CORRESPONDING NOTE. ADDED ROUGH-INS AT NEW PRE-RINSE LOCATIONS
B	03/28/19	ST	REMOVED 2 CUSTOMER SUPPLIED FAUCETS ALONG WITH CORRESPONDING ROUGH-INS, AND REMOVED "BUMP-OUTS" ON CONVEYOR, AND MOVED TROUGH BACK 2"
C	06/10/19	ST	ADDED (1) CONTROL STATION AND (1) SET OF TURN GUIDES.

CADDY CORPORATION
509 SHARPTOWN ROAD, P.O. BOX 345
BRIDGEPORT, NJ 08014
TEL: (856) 467-4222 FAX: (856) 467-5511
WWW.CADDYCORP.COM

EQUIPMENT SCHEDULE

MT-12 RENNOVATION AND NEW SOILED WARES CONVEYOR

CADDY NO. 34516-1 ITEM NO. 1

JOB: SUNY DELHI - McDONALD HALL
LOC: AGAWAM, MA
CUST: KITTREDGE EQUIPMENT CO. INC
CUST #: 109372